

# *Alberta Population*

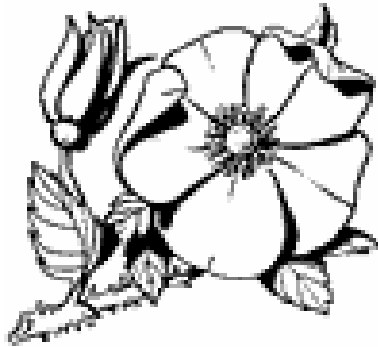


Table 31

**Alberta Population - Ten Year Comparison**

<b>Year</b>	<b>Population</b>
1996	2,636,489
1997	2,695,474
1998	2,730,818
1999	2,819,423
2000	2,879,743
2001	2,907,882
2002	2,994,387
2003	3,034,362
2004	3,066,257
2005	3,182,178

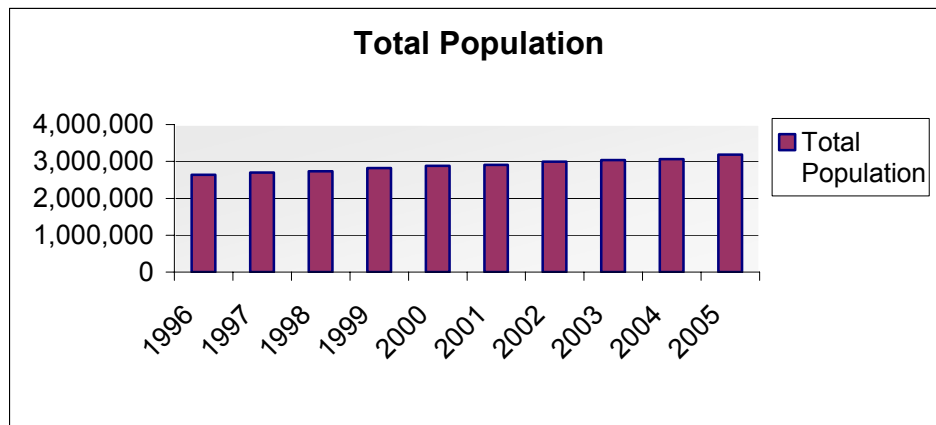


Table 32

## Alberta Municipalities of Population 1,000 or Greater, 2005

Municipality	Population 2005	Birth by Residence of Mother	Rate/1000	Marriage by Place of Event	Rate/1000	Death by Residence of	
						Deceased	Rate/1000
Airdrie	27069	453	16.74	89	3.29	85	3.14
Athabasca	2415	66	27.33	20	8.28	59	24.43
Banff	8352	78	9.34	653	78.18	15	1.80
Barrhead	4213	54	12.82	43	10.21	91	21.60
Bassano	1320	21	15.91	2	1.52	20	15.15
Beaumont	8361	104	12.44	32	3.83	11	1.32
Beaverlodge	2176	25	11.49	15	6.89	22	10.11
Bentley	1094	23	21.02	7	6.40	10	9.14
Black Diamond	1866	27	14.47	7	3.75	31	16.61
Blackfalds	4373	92	21.04	28	6.40	12	2.74
Bon Accord	1532	30	19.58	4	2.61	11	7.18
Bonnyville	5896	133	22.56	46	7.80	54	9.16
Bow Island	1704	28	16.43	8	4.69	24	14.08
Bowden	1174	10	8.52	11	9.37	13	11.07
Brooks	11604	258	22.23	75	6.46	103	8.88
Bruderheim	1202	17	14.14	4	3.33	10	8.32
Calgary	956078	12910	13.50	4536	4.74	4680	4.89
Calmar	1992	24	12.05	7	3.51	20	10.04
Camrose	15850	180	11.36	100	6.31	198	12.49
Canmore	11442	131	11.45	226	19.75	30	2.62
Cardston	3475	104	29.93	265	76.26	60	17.27
Carstairs	2501	35	13.99	20	8.00	35	13.99
Chestermere	7904	121	15.31	21	2.66	13	1.64
Claresholm	3622	37	10.22	23	6.35	67	18.50
Coaldale	6104	92	15.07	31	5.08	61	9.99
Coalhurst	1493	30	20.09	10	6.70	9	6.03
Cochrane	12688	175	13.79	114	8.98	78	6.15
Cold Lake	11595	202	17.42	70	6.04	56	4.83
Coronation	1074	13	12.10	6	5.59	20	18.62
Crossfield	2603	35	13.45	8	3.07	22	8.45
Devon	6095	102	16.74	86	14.11	24	3.94
Didsbury	3932	44	11.19	20	5.09	63	16.02
Drayton Valley	6210	148	23.83	51	8.21	66	10.63
Drumheller	7785	72	9.25	29	3.73	75	9.63
Eckville	1019	18	17.66	9	8.83	19	18.65
Edmonton	712391	8575	12.04	3868	5.43	4619	6.48
Edson	8365	133	15.90	56	6.69	67	8.01
Elk Point	1440	30	20.83	5	3.47	21	14.58
Fairview	3150	43	13.65	19	6.03	43	13.65
Falher	1109	16	14.43	3	2.71	11	9.92
Fort Macleod	2990	53	17.73	19	6.35	49	16.39
Fort McMurray	73176	727	9.93	194	2.65	108	1.48
Fort Saskatchewan	14685	189	12.87	89	6.06	114	7.76
Fox Creek	2337	48	20.54	6	2.57	10	4.28
Gibbons	2730	59	21.61	15	5.49	18	6.59
Grande Cache	3828	48	12.54	15	3.92	22	5.75
Grande Prairie	44631	784	17.57	316	7.08	235	5.27
Grimshaw	2435	49	20.12	12	4.93	13	5.34
Hanna	2986	29	9.71	17	5.69	46	15.41
High Level	3849	130	33.78	18	4.68	15	3.90
High Prairie	2820	110	39.01	24	8.51	45	15.96
High River	9522	122	12.81	58	6.09	97	10.19
Hinton	9405	154	16.37	70	7.44	52	5.53
Innisfail	7208	101	14.01	29	4.02	102	14.15
Irricana	1104	22	19.93	8	7.25	7	6.34
Jasper	4511	42	9.31	291	64.51	14	3.10
Killam	1004	11	10.96	12	11.95	19	18.92
Lac La Biche	2776	86	30.98	35	12.61	57	20.53
Lacombe	10850	130	11.98	93	8.57	86	7.93
Lamont	1692	21	12.41	6	3.55	52	30.73

Table 32

Continued

Municipality	Population 2005	Birth by Residence of Mother	Rate/1000	Marriage by Place of Event	Rate/1000	Death by Residence of	
						Deceased	Rate/1000
Leduc	15630	220	14.08	123	7.87	111	7.10
Legal	1058	15	14.18	18	17.01	13	12.29
Lethbridge	77202	951	12.32	479	6.20	648	8.39
Lloydminster	15487	18	1.16	115	7.43	58	3.75
Magrath	1993	35	17.56	12	6.02	24	12.04
Manning	1293	30	23.20	6	4.64	12	9.28
Mayerthorpe	1570	25	15.92	10	6.37	48	30.57
Medicine Hat	56048	666	11.88	360	6.42	550	9.81
Millet	2125	22	10.35	17	8.00	27	12.71
Morinville	6540	109	16.67	30	4.59	54	8.26
Nanton	1841	19	10.32	13	7.06	31	16.84
Okotoks	11664	210	18.00	66	5.66	61	5.23
Olds	6703	84	12.53	59	8.80	91	13.58
Onoway	1036	24	23.17	13	12.55	23	22.20
Oyen	1101	10	9.08	8	7.27	13	11.81
Peace River	6240	119	19.07	40	6.41	39	6.25
Penhold	1750	34	19.43	7	4.00	10	5.71
Picture Butte	1701	33	19.40	9	5.29	22	12.93
Pincher Creek	3666	52	14.18	24	6.55	42	11.46
Ponoka	6330	74	11.69	51	8.06	90	14.22
Provost	2078	33	15.88	14	6.74	22	10.59
Rainbow Lake	1186	17	14.33	0	0.00	1	0.84
Raymond	3200	59	18.44	10	3.13	37	11.56
Red Deer	79082	1126	14.24	492	6.22	516	6.52
Redcliff	4372	91	20.81	21	4.80	26	5.95
Redwater	2172	30	13.81	10	4.60	21	9.67
Redwood Meadows	1150	8	6.96	6	5.22	1	0.87
Rimbey	2160	23	10.65	23	10.65	56	25.93
Rocky Mountain House	6584	132	20.05	57	8.66	71	10.78
Sexsmith	1934	37	19.13	16	8.27	10	5.17
Sherwood Park	80232	839	10.46	263	3.28	309	3.85
Slave Lake	6600	127	19.24	26	3.94	27	4.09
Smoky Lake	1011	15	14.84	9	8.90	35	34.62
Spirit River	1100	15	13.64	6	5.45	14	12.73
Spruce Grove	18405	306	16.63	117	6.36	122	6.63
St. Albert	56310	623	11.06	199	3.53	262	4.65
St. Paul	5144	97	18.86	38	7.39	72	14.00
Stettler	5226	64	12.25	42	8.04	75	14.35
Stony Plain	10544	151	14.32	68	6.45	134	12.71
Strathmore	9653	157	16.26	55	5.70	63	6.53
Sundre	2267	42	18.53	31	13.67	42	18.53
Swan Hills	1807	15	8.30	7	3.87	2	1.11
Sylvan Lake	8504	147	17.29	60	7.06	48	5.64
Taber	7671	123	16.03	46	6.00	62	8.08
Three Hills	3554	44	12.38	14	3.94	29	8.16
Tofield	1818	35	19.25	19	10.45	44	24.20
Trochu	1033	7	6.78	19	18.39	25	24.20
Turner Valley	1786	27	15.12	6	3.36	15	8.40
Two Hills	1109	19	17.13	5	4.51	36	32.46
Valleyview	1856	67	36.10	13	7.00	34	18.32
Vauxhall	1112	28	25.18	24	21.58	12	10.79
Vegreville	5376	63	11.72	23	4.28	90	16.74
Vermilion	4435	26	5.86	28	6.31	64	14.43
Viking	1052	14	13.31	11	10.46	35	33.27
Vulcan	1762	15	8.51	7	3.97	39	22.13
Wainwright	5365	77	14.35	42	7.83	66	12.30
Wembley	1542	34	22.05	6	3.89	12	7.78
Westlock	4820	78	16.18	40	8.30	86	17.84
Wetaskiwin	11154	166	14.88	58	5.20	149	13.36
Whitecourt	8747	166	18.98	35	4.00	36	4.12